



## A MESSAGE FROM THE UNION COUNTY WATER ADMINISTRATOR

Since our last newsletter, we have made significant progress on the Yadkin Regional Water Supply Project (YRWSP), a collaborative effort between Union County and the Town of Norwood to create a long-term, sustainable water supply.

After breaking ground in 2020, construction is more than halfway complete. 2022 remains an important year for the team. In this newsletter, you will find updates on our progress and some unique project features. Our next long-term, reliable source of water is on track for project completion in 2023.

I would like to recognize all project team members for their dedication and hard work to keep this project on track throughout the COVID-19 pandemic. Additionally, I would like to thank you for your continued support and interest in the Yadkin Regional Water Supply Project.



Hyong Yi  
**Union County Water Administrator**

## TIME TO CELEBRATE!

On September 14, 2022, the project team celebrated the official tie-in of the water supply pipeline into the new water treatment plant currently under construction in Monroe, NC. Project team members, County administrators and elected officials commemorated the milestone by signing the connecting pipe, leaving their mark on this historic project.

Keepsake bolts were given to attendees to remember this important milestone. These keepsake bolts are similar to the bolts that will be used to secure the pipe connection.



[WATCH THE VIDEO](#)



## CROSSING ROCKY RIVER

For the YRWSP to work, the team has to get water from Lake Tillery to Union County. With the Rocky River on the route, this was a tall order. The team's solution was to install piping underneath the bed of the Rocky River.

The river crossing is located along Highway 205, just north of New Salem. This area marks the boundary between Stanly County and Union County.

During the process, the project team built a dam to redirect water and narrow the Rocky River. Construction crews used a combination of skilled labor and heavy equipment to successfully install a steel pipe, measuring 3.5 feet in diameter, below the bed of the Rocky River and encased it in concrete.

Crews faced weather challenges to complete this work. Rain upstream had the potential to swell the river and cause the construction crew's dam to breach, which would have significantly delayed work. The team responded by closely monitoring rainfall and planning around rainfall within the basin to complete the job safely.

With work on the Rocky River Crossing complete, Yadkin Regional Water Supply Project is one step closer to providing safe, reliable water to residents and businesses for decades to come.



## WATER INTAKE AND PUMP STATION

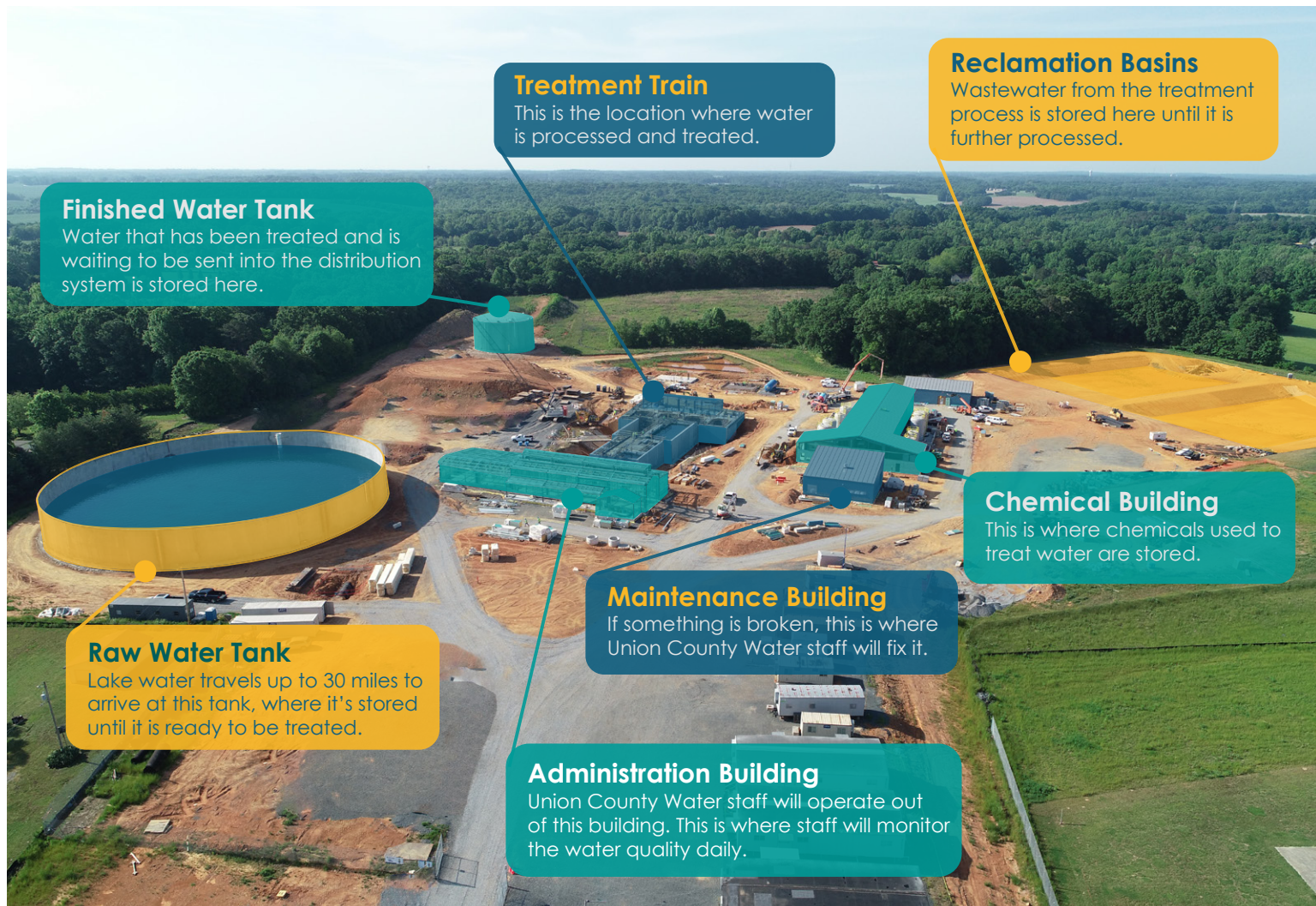
Check it out: This photo shows crews working on the new Lake Tillery water intake in Norwood. The team's construction equipment is all contained on floating barges!

The water intake is the starting point for our new water supply. The intake pipe, which we are installing 15 to 30 feet below the surface of the lake, will pull water into the project's pump station through a screen. For safety purposes, a beacon will be installed on top of each intake tower to alert boaters and swimmers to their location.

To track our work, visit [yadkinwater.com/construction](http://yadkinwater.com/construction).



# FROM LAKE WATER TO TAP WATER: WHERE WE ARE NOW



## THE BIGGER PICTURE

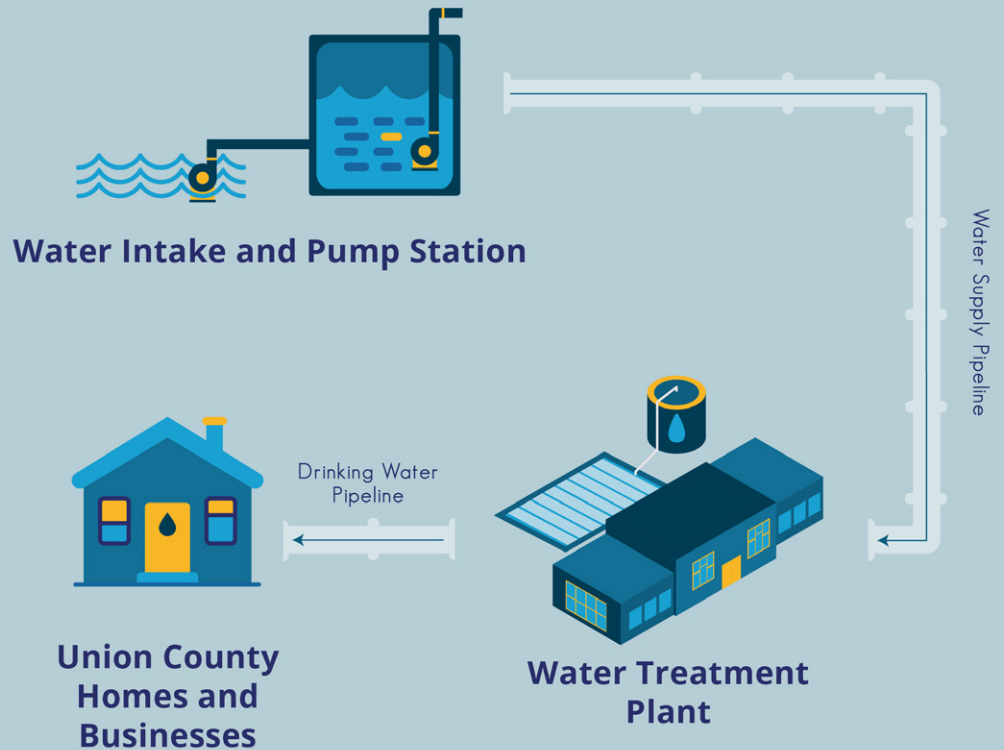
Union County is growing. We are unique in that all of our drinking water comes from outside our borders. Union County currently receives about 80 percent of its water from the Catawba River Water Supply Project in Lancaster County, SC. The other 20 percent comes from another neighbor, Anson County.

The water we have today is not enough for our current needs and future growth. The purpose of the YRWSP is to secure another sustainable, reliable source to support our current and future demand. This new infrastructure is one part of what Union County Water is doing to support our vibrant community.



# WATER'S JOURNEY TO YOUR TAP

## Water's Journey to Your Tap



Yadkin water will take a long trip to arrive at your tap, clean and ready for you and your family to use.

- First, water flows from Lake Tillery to an intake pipe that leads into a pump station. The station pumps the water to Union County.
- After a 30-mile journey, it arrives at a new water treatment plant in New Salem, where it is safely treated from lake water to drinking water per state and federal standards.

- Finally, the water passes through a drinking water pipeline to enter Union County's distribution system.

**Fill a glass and say "cheers!" Yadkin Water is scheduled to arrive at a tap near you in 2023.**

## CONTACT US

### ***Have a question?***

Check out the FAQs page of our website at [yadkinwater.com](http://yadkinwater.com).

### ***Want to leave a comment?***

Send us a message at [info@yadkinwater.com](mailto:info@yadkinwater.com), or fill out the contact form on our website.



# PROJECT MAP

