



WELCOME

PROJECT BENEFITS

Union County

- Long-term, sustainable water supply for Yadkin River Basin customers
 - » 16.5 million gallons of water per day to support projected needs in 2050
- Reliable, dependable water source for existing and future development

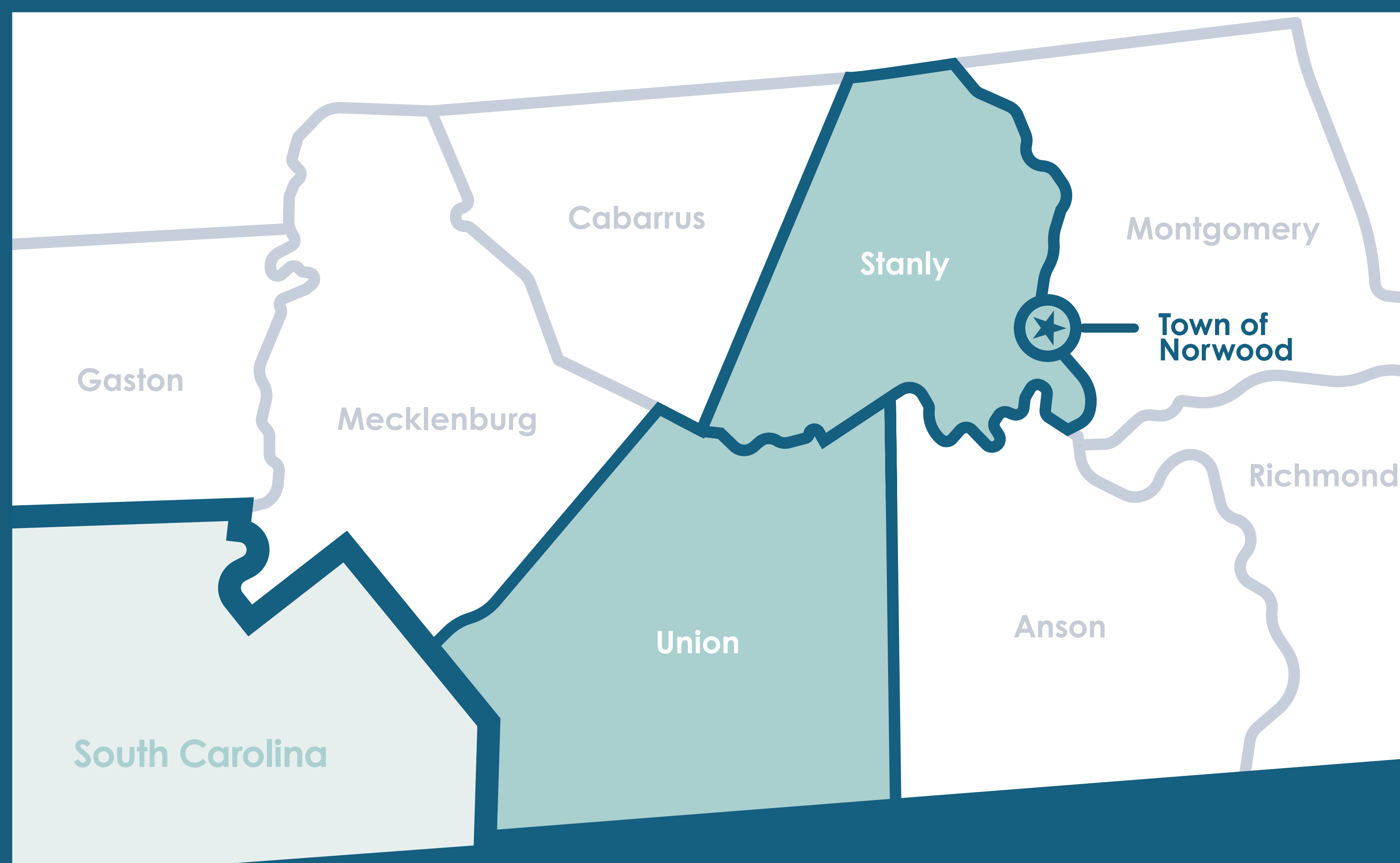
Town of Norwood

- New water intake and pump station facilities to replace WWII-era infrastructure
 - » Access to four times more water than today's facilities can provide
- Monthly revenue stream to offset costs of project participation

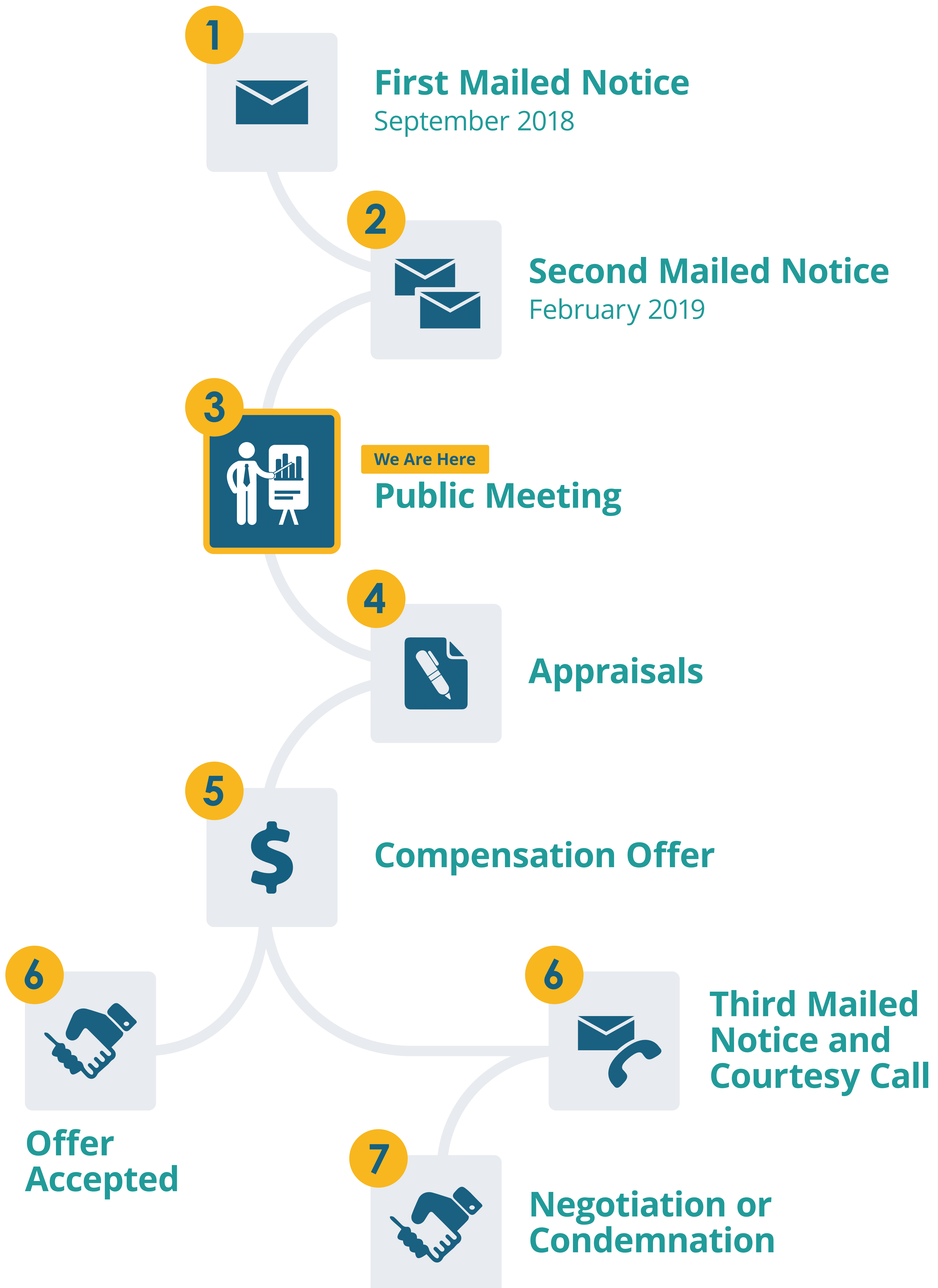
Stanly County

- Access to Lake Tillery water through the Project's new intake facility
- Ongoing revenue stream as water is withdrawn for Union County

Area Map

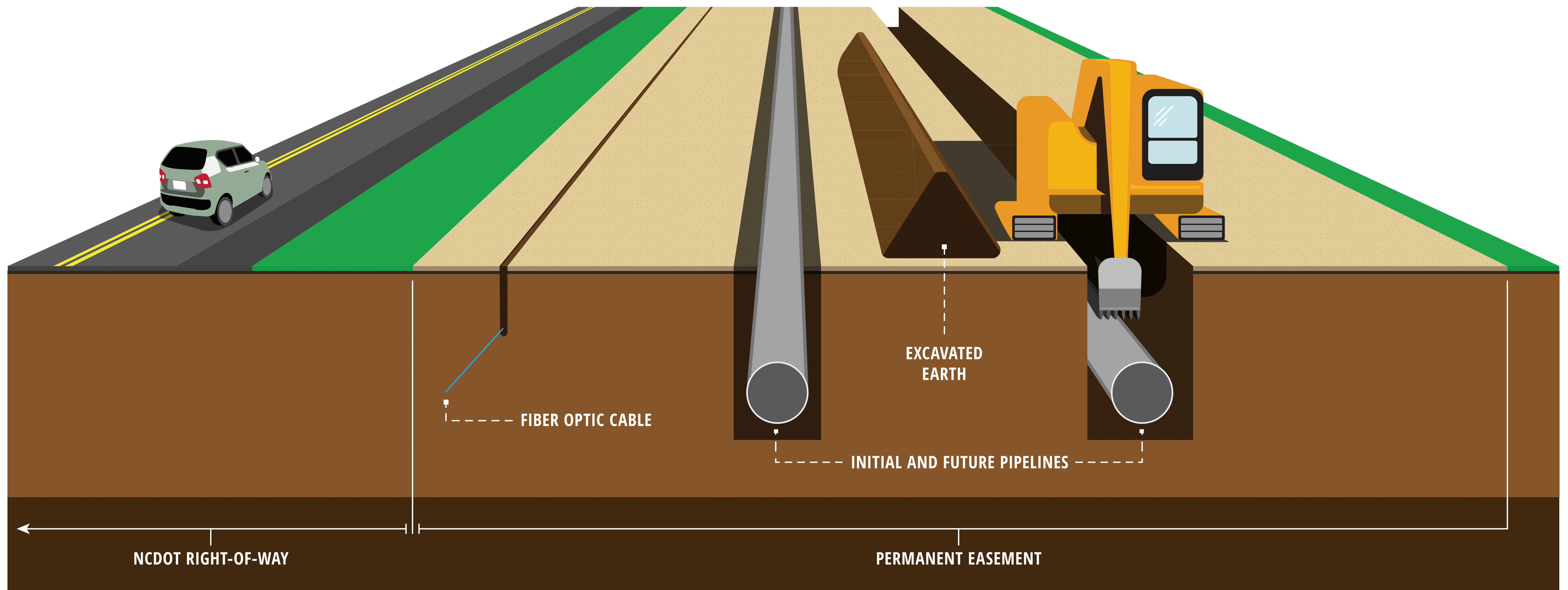


THE EASEMENT ACQUISITION PROCESS



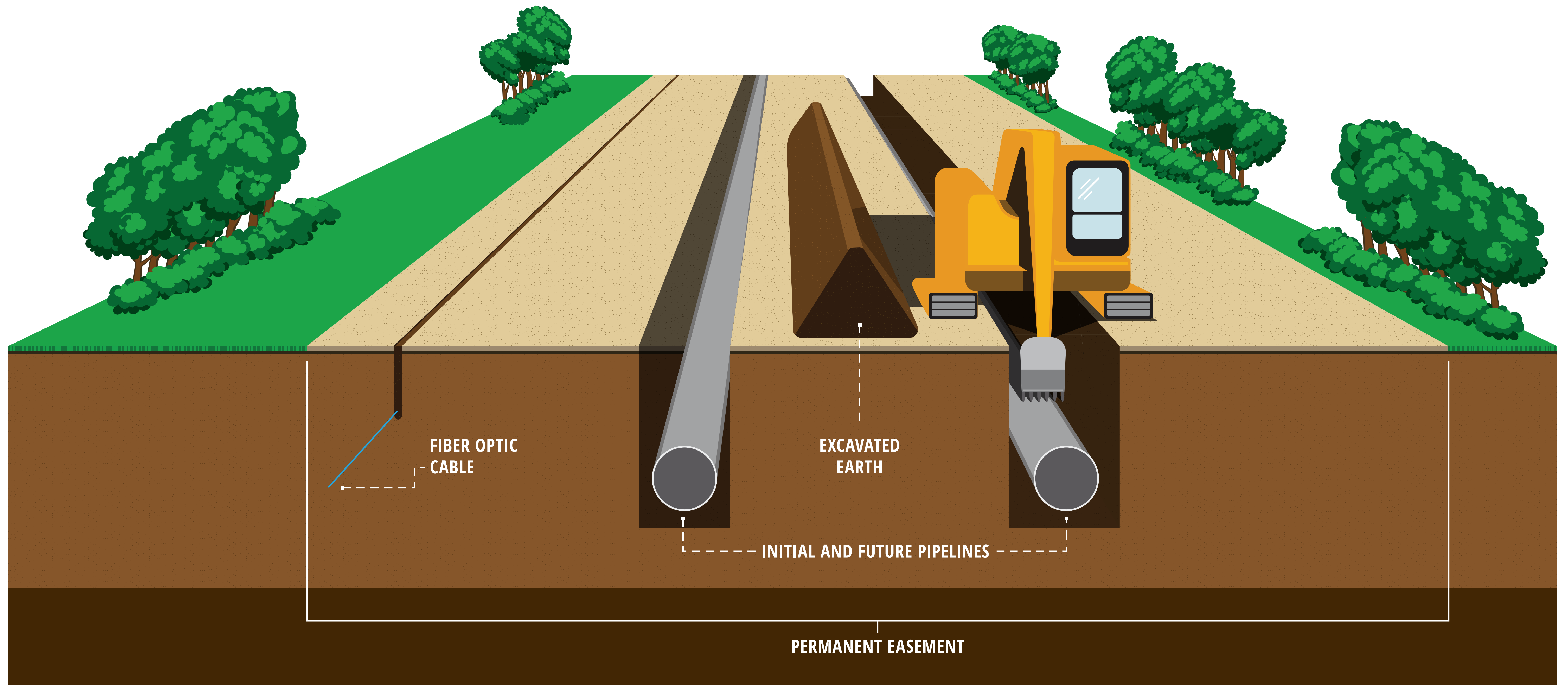
WATER SUPPLY PIPELINE

Roadside



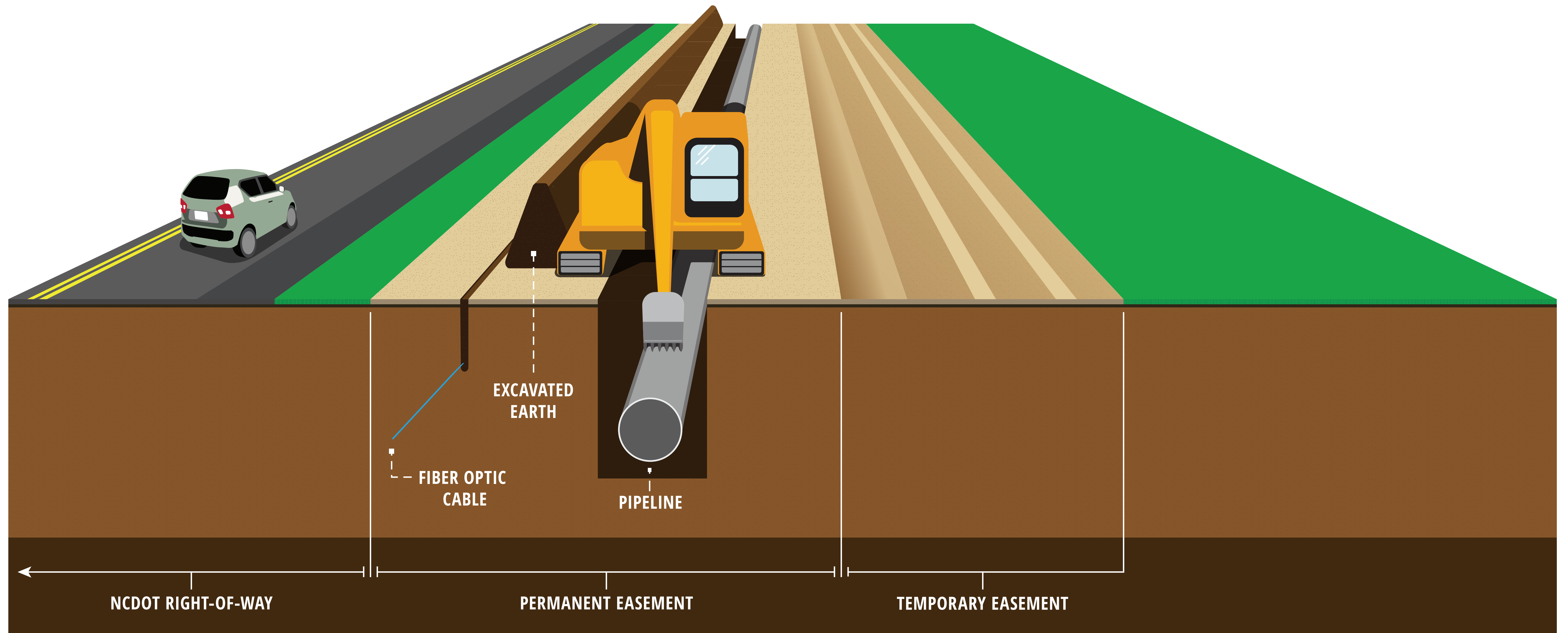
WATER SUPPLY PIPELINE

Cross-Country



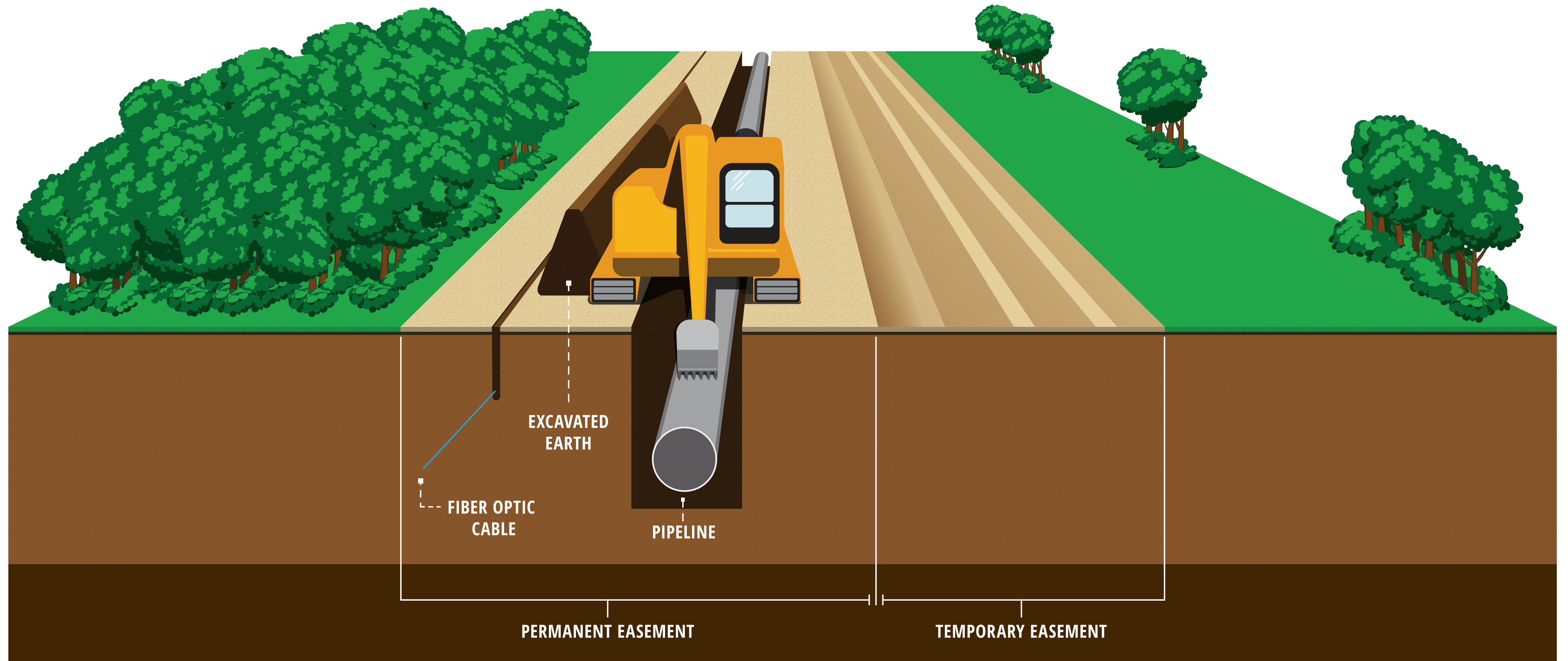
DRINKING WATER PIPELINE

Roadside

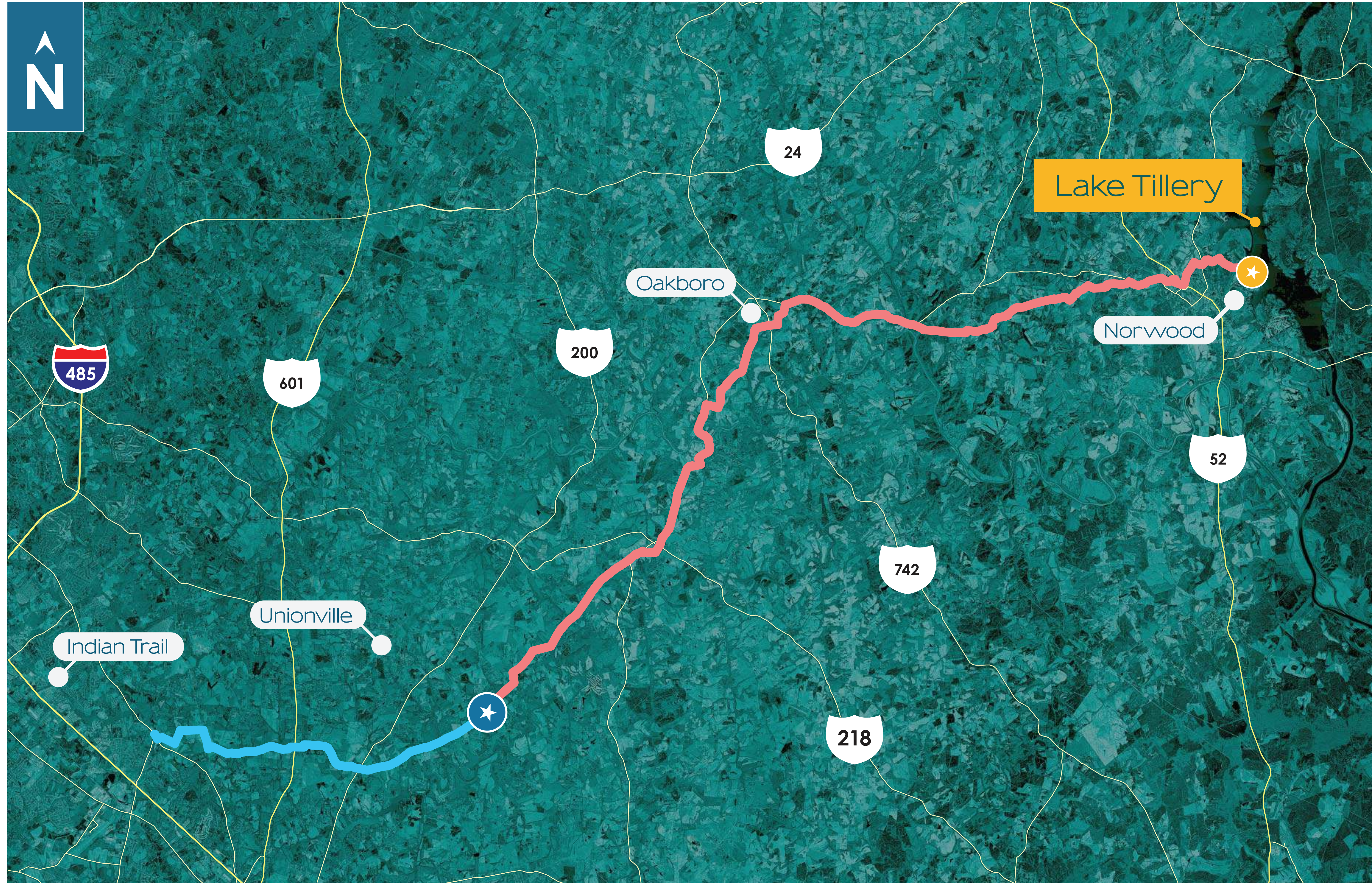


DRINKING WATER PIPELINE

Cross-Country



PROJECT MAP



**WATER INTAKE
FACILITY AND
PUMP STATION**



**WATER SUPPLY
PIPELINE**



**WATER
TREATMENT
PLANT**



**DRINKING
WATER
PIPELINE**